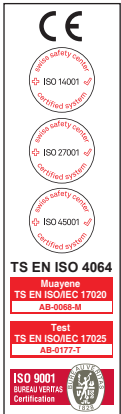


BAYLAN

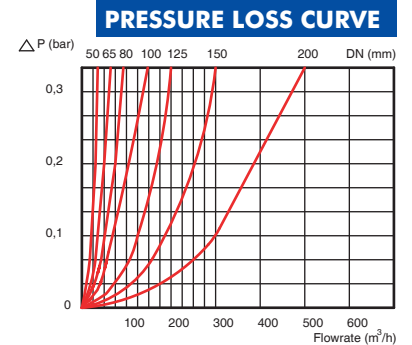
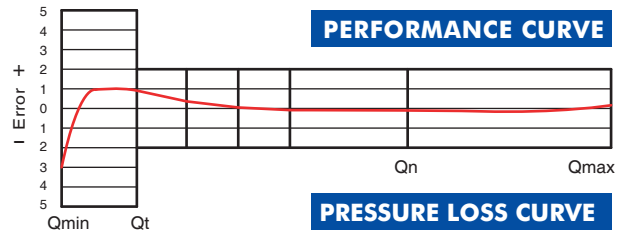
WATER METERS

WOLTMANN Type Cold Water Meters



GENERAL

- Woltmann type design for industrial applications
- Metrological class: B
- IP67 protected dry type mechanism
- Suitable for potable water
- Low head loss • Good sensitivity in initial starting
- Body internally/externally e/p powder painted
- Optical reading available • 3 years of warranty
- Pulse output and AMR reading features are optional
- Special, thick glass with resistance to impacts
- Almost no maintenance
- Service and spare parts available for 10 years



MAIN TECHNICAL DATA

At low flows : $\pm 5\%$ (error) between minimum flow rate (Q_{min}) and transitional flow rate (Q_t)
 At high flows : $\pm 2\%$ (error) between transitional flow rate (Q_t) and maximum flow rate (Q_{max})
 Max. Working Temperature : 50°C
 Max. Working Pressure : 16 bar

DIMENSIOS AND WEIGHTS

METER SIZE DIA (mm)	L LENGTH	B WIDTH	H HEIGHT	CONNECTING FLANGE			PACKAGE WEIGHT (Without Flange) (kg)	PACKAGE WEIGHT (With Flange) (kg)
				D2 (mm) FLANGE DIA	D1 (mm) BOLT CIRCLE DIA.	CONNECTION BOLT (PCS-DIA)		
50	200	165	235	165	125	4 - M16	13.72	18.45
65	200	185	255	185	145	4 - M16	14.77	20.32
80	225	200	265	200	160	8 - M16	16.87	23.50
100	250	220	275	220	180	8 - M16	17.82	25.37
125	250	245	285	250	210	8 - M16	19.85	29.75
150	300	285	310	285	240	8 - M20	49.20	62.30
200	350	345	370	340	295	12- M20	67.55	81.20

METER SIZE DIA (mm)	TYPE	CLASS	Qmax MAX FLOW	Qn NOMINAL FLOW	Qt TRANSITIONAL FLOW	Qmin MIN. FLOW	SMALLEST READING RESOLUTION	MAX. REGISTRATION CAPACITY
			m ³ /h					
50	BW-6	B	30	15	3	0,45	0,0002	999999
65	BW 0	B	50	25	5	0,75	0,002	9999999,9
80	BW 1	MID R 63	78,75	63	1,6	1	0,002	9999999,9
		B	80	40	8	1,2		
100	BW 2	B	120	60	12	1,8	0,002	9999999,9
125	BW 3	MID R 50	200	160	5,12	3,2	0,002	9999999,9
		B	200	100	20	3		
150	BW 4	B	300	150	30	4,5	0,02	99999999
200	BW 5	B	500	250	50	7,5	0,02	99999999

"Due to continuous development of our products, we reserve the right to modify our product design or construction without prior notice."